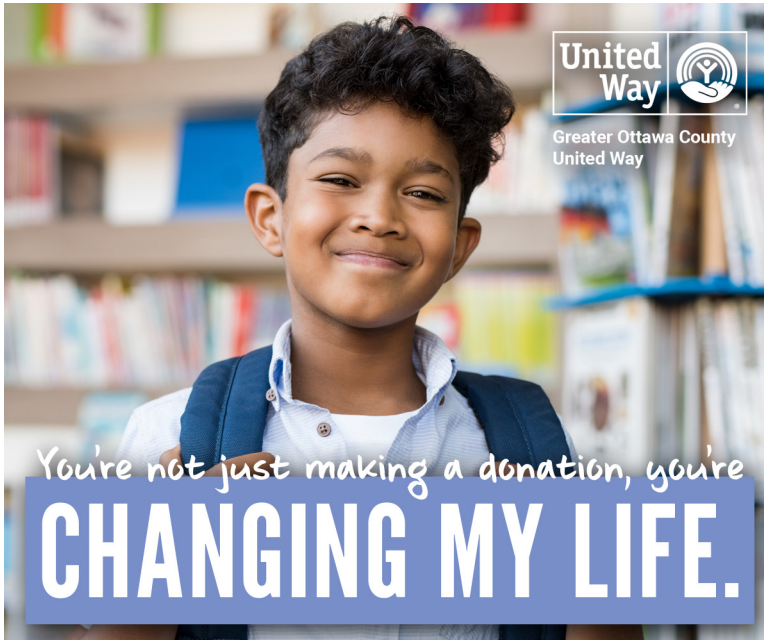


LEADERS LIGHT THE WAY

Double your donation and double your impact in the community with a first-time or increased leadership gift!



- › Join the lighthouse leadership circle when you (and other members of your household, combined) give \$500 or more per year.
- › **NEW THIS YEAR:** Young Leaders (under 40) are invited to join the Lighthouse Leadership Circle by giving a first time gift of \$250 or more.
- › When you give at the Lighthouse Leadership Circle level for the first time, the amount of your donation is doubled. When you increase your leadership gift, the amount of the increase is doubled. This match of \$93,500 is provided by some of our generous donors, but they won't give until you give, so please help us meet the challenge.
- › **For every \$1 you donate, United Way creates \$3.70 in community benefit.**
- › Your gift touches the lives of 1 in 4 residents of Ottawa County, and makes an impact in the areas of education, health, financial stability/basic needs and affordable housing.

Lighthouse Leadership Circle members receive recognition in our annual report and an invitation to our annual leadership appreciation event.



Join the Circle at one of the following giving levels:

Young Leaders Circle
(40 & under)
\$250-\$499

Navigator's Circle
\$500-\$999

Commander's Circle
\$1,000-\$2,499

Captain's Circle
\$2,500-\$4,999

Admiral's Circle
\$5,000-\$9,999

Beacon Society
\$10,000 and up

How do I give?

You may give through your employer's workplace campaign, or visit www.OttawaUnitedWay.org and click "Donate."

The members of the 2017-2018 Lighthouse Leadership Circle can be found in our 2018 Impact Report: www.ottawaunitedway.org/impact-report

www.OttawaUnitedWay.org



Holland Office
115 Clover St., Suite 300
Holland, MI 49423
616.396.7811

Grand Haven Office
700 Fulton St., Suite B
Grand Haven, MI 49417
616.842.7130

